



Bathtub - Meta

Wall elbow with integrated wall bracket - polished chrome

Article number: 28 490 660-00

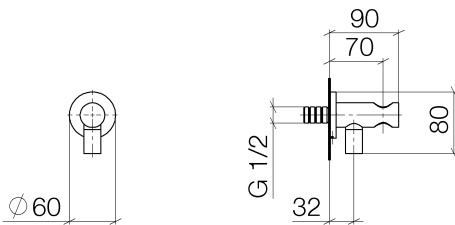
- 3/8" Shower outlet
- Flange diameter 2-3/8"
- 1/2" connection
- Internal backflow preventer.



polished chrome

Accessory is required for this item.

Dimensional drawing

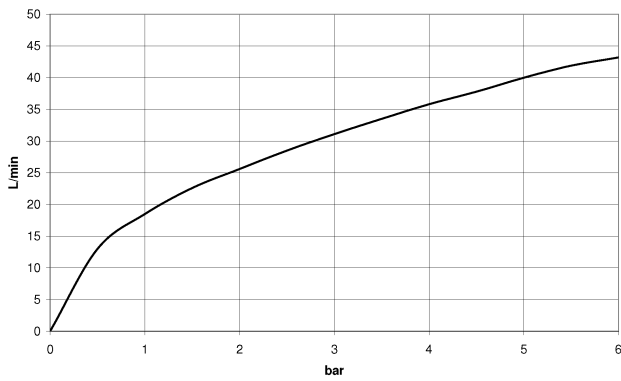


All dimensions in mm / inch = mm x 0,0394



Bathtub - Meta
Wall elbow with integrated wall bracket - polished chrome
Article number: 28 490 660-00

Flow rate chart





Bathtub - Meta

Wall elbow with integrated wall bracket - polished chrome

Article number: 28 490 660-00

Other surface finishes



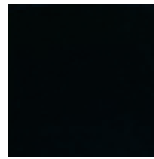
platinum matte
28 490 660-06



platinum
28 490 660-08



Brushed Durabrass
28 490 660-28



black matte
28 490 660-33



Dark Platinum matte
28 490 660-99

More custom finish options are available via special production (xTra Service). Please see our finish matrix for availability and pricing or contact a Dornbracht representative.

Required article



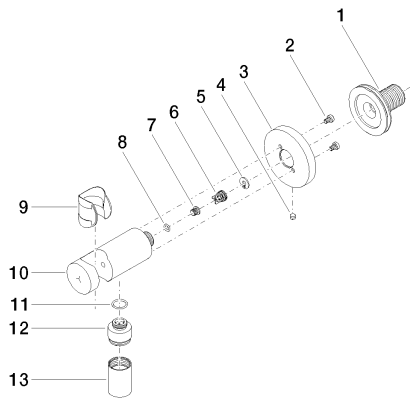
35 080 970-90 0010
Rough-in adapter -

Bathtub - Meta

Wall elbow with integrated wall bracket - polished chrome

Article number: 28 490 660-00

Spare parts list



Number	Item Number	Designation	Number of units
1	09 24 03 280 90	nipple	1
2	09 30 30 037 90	screw	2
3	09 27 66 001-00	rosette	1
4	09 31 11 112 90	pin	1
5	09 16 01 023 90	ring	1
6	09 23 01 131 90	back-flow preventer	1
7	09 30 30 113 20 90	screw	1
8	09 14 10 001 90	seal	1
9	09 18 40 216 90	sleeve	1
10	09 11 03 124-00	connection	1
11	09 14 10 213 90	seal	1
12	09 24 03 279-00	nipple	1
13	09 21 02 069-00	cover	1