

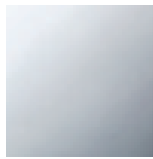
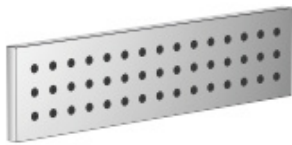


Shower - CL.1

WATER BAR Body spray - polished chrome

Article number: 36 517 979-00

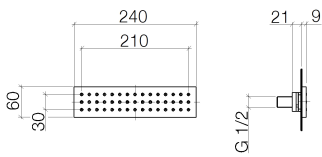
- Stream: Rain
- Descaling system
- Cover plate 9-1/2" x 2-3/8"
- 1/2" connection
- Water flow rate limited to max. 1.6 gpm
- Fittings group in compliance with DIN 4109: 1



polished chrome

Accessory is required for this item.

Dimensional drawing

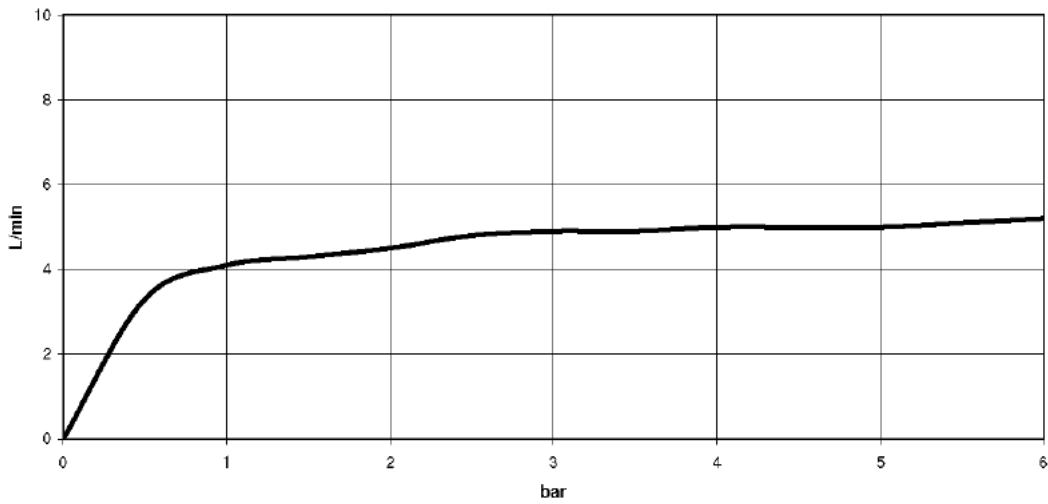


All dimensions in mm / inch = mm x 0,0394

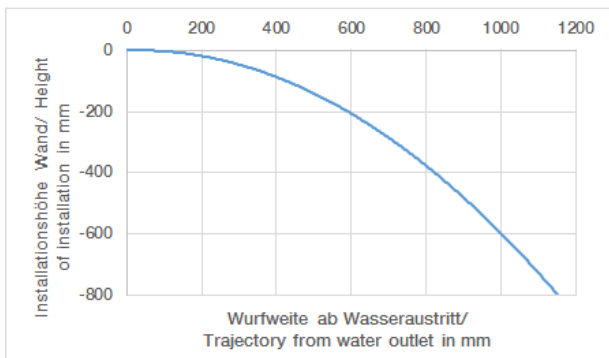
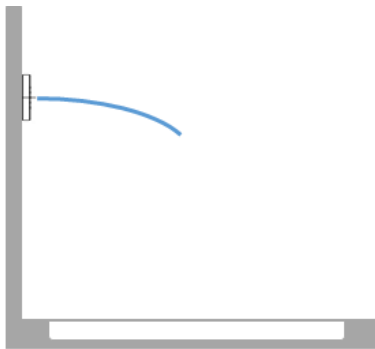


Shower - CL.1
WATER BAR Body spray - polished chrome
Article number: 36 517 979-00

Flow rate chart



Trajectory length diagram





Shower - CL.1
WATER BAR Body spray - polished chrome
Article number: 36 517 979-00

Other surface finishes



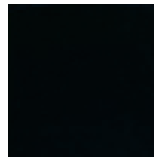
platinum matte
36 517 979-06



platinum
36 517 979-08



Brushed Durabrass
36 517 979-28



black matte
36 517 979-33



Dark Platinum matte
36 517 979-99

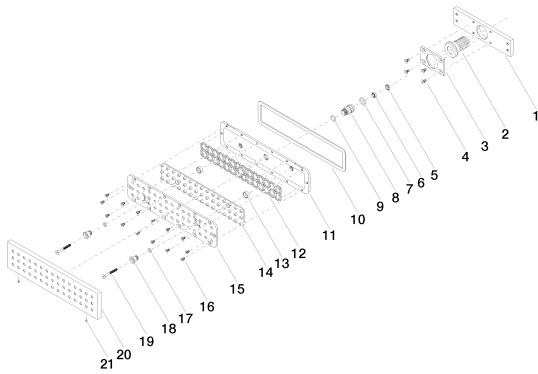
More custom finish options are available via special production (xTra Service). Please see our finish matrix for availability and pricing or contact a Dornbracht representative.

Required article



35 206 970-90 0010
Rough -

Shower - CL.1
 WATER BAR Body spray - polished chrome
 Article number: 36 517 979-00



Spare parts list

| Number | Item Number | Designation | Number of units |
|--------|--------------------|--------------|-----------------|
| 1 | 09 11 02 137 90 | holder | 1 |
| 2 | 09 24 04 247 20 90 | connection | 1 |
| 3 | 09 11 02 138 90 | plate | 1 |
| 4 | 09 30 30 116 90 | screw | 4 |
| 5 | 09 16 01 016 90 | ring | 1 |
| 6 | 09 23 01 032 90 | flow reducer | 1 |
| 7 | 09 14 10 003 90 | seal | 1 |
| 8 | 09 24 04 248 90 | nipple | 1 |
| 9 | 09 14 10 042 90 | seal | 1 |
| 10 | 09 14 03 133 90 | seal | 1 |
| 11 | 09 11 02 135-00 | base | 1 |
| 12 | 09 17 97 058 90 | holder | 1 |
| 13 | 09 28 10 142 20 90 | ring | 2 |
| 14 | 09 12 01 076 90 | insert | 1 |
| 15 | 09 11 02 136-00 | cover | 1 |
| 16 | 09 30 30 163 90 | screw | 14 |
| 17 | 09 14 10 132 90 | seal | 2 |
| 18 | 09 24 04 249-00 | nipple | 2 |
| 19 | 09 30 30 164 90 | screw | 2 |
| 20 | 09 27 99 001-00 | rosette | 1 |
| 21 | 09 31 11 006 90 | pin | 2 |