

## Features

- Two full-extension 12¾" (325 mm) drawers with soft-close side-mount slides.
- 18" (457 mm) cabinet interior with two shelves provides ample storage space.
- Finish-matched cabinet interior.
- Customize your storage with optional accessories such as floor liners, drawer organizers, and perfectly sized containers (sold separately).
- Coordinates with K-33584 upgraded hardware finishes (sold separately).

## Material

- Solid wood and moisture-resistant MDF.
- Painted exterior.

## Installation

- Easy installation – no special tools required.

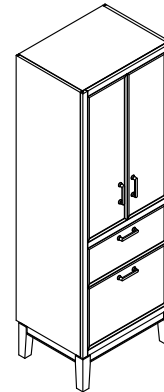
## Recommended Products/Accessories

K-33583-ASB 28" x 24" wall cabinet  
K-33584 5" cabinet pull  
K-33577-ASB  
K-33578-ASB  
K-33579-ASB  
K-33580-ASB  
K-33581-ASB  
K-33585  
K-33586  
K-33587  
K-33588  
K-27933  
K-29747

## Included Components

Additional Components:

Wall mounting hardware

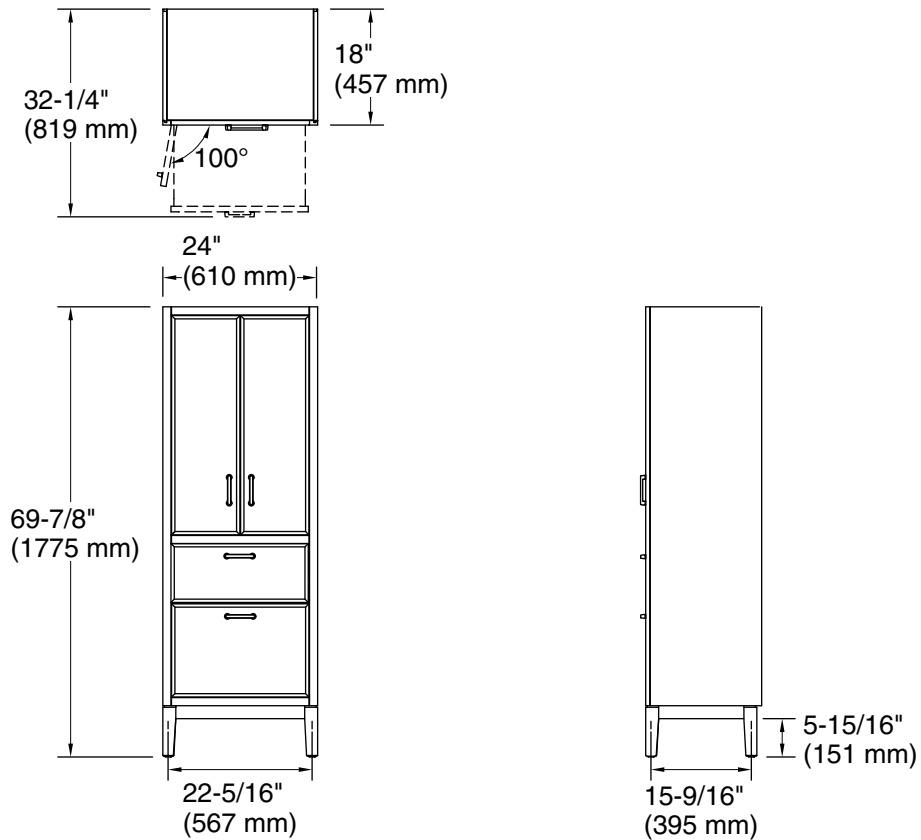


## Codes/Standards

EPA TSCA Title VI  
CARB P2

## KOHLER® One-Year Limited Warranty

See website for detailed warranty information.



### Technical Information

All product dimensions are nominal.

### Notes

Install this product according to the installation instructions.