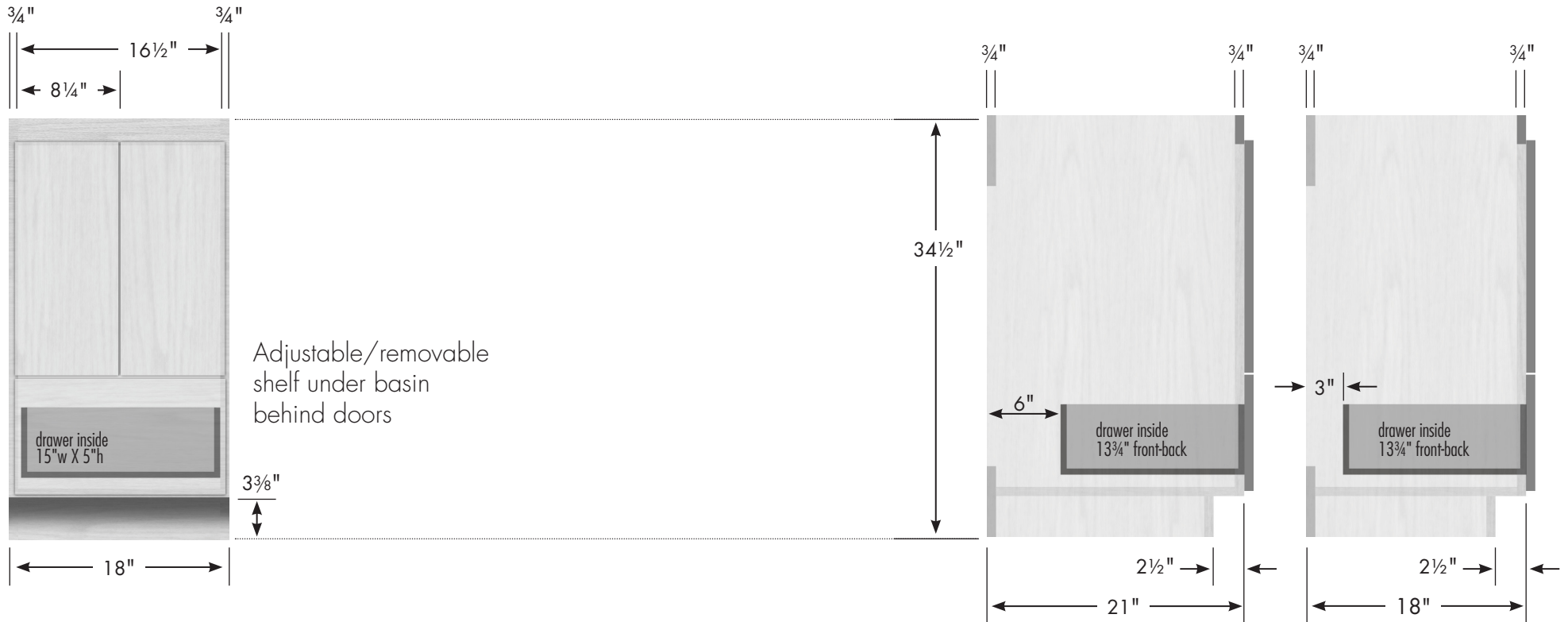


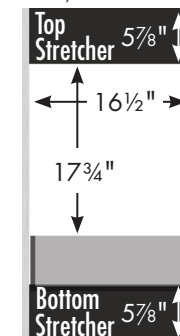
# STRASSER

woodenworks

## 34½" tall Montlake Vanity/Linen Lower 18" wide, no side drawers



Vanity back clear openings for plumbing  
(may need to cut adjustable shelf)



**18" Montlake Vanity/  
Linen Lower  
No Side Drawers**  
18" wide  
34½" tall  
21" or 18" front-to-back

