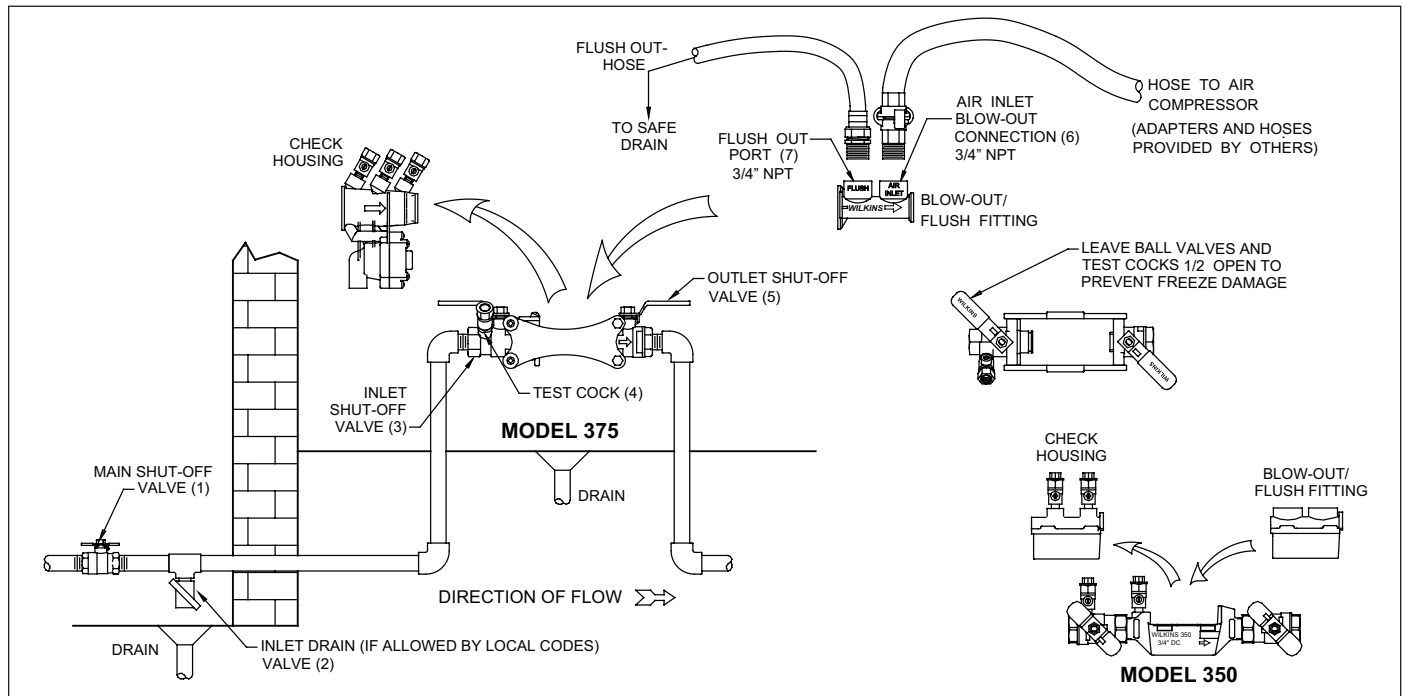


Model 350 & 375

Double Check Valve Backflow Preventer 3/4" - 2"

Reduced Pressure Principle Backflow Preventer 3/4" - 2"

Blow-Out / Flush Procedure for Freeze Protection



To Blow Out System for freeze protection, use the following procedure:

1. Turn off main shut-off valve (1) that supplies water to the system.
2. Open inlet drain valve in the system (2). Open inlet and outlet shut-off valves on the backflow preventer (3 & 5) and all of the test cocks (4). Leave all valves and test cocks in the half open/half closed (45°) position to allow full drainage of the ball valves and test cocks.
3. Remove black backflow preventer housing. Replace with orange Blow-Out / Flush fitting. Store backflow preventer housing in a safe location for winter. Orange blow out flush fitting may remain in valve body during winter. Place plugs in ports to keep debris from entering housing.
4. A hose can be connected to flush out port (7) to drain water to a safe drain.
5. Connect an air hose to the air inlet connection (6). Inject an adequate volume of air to remove all water from the downstream portion of the system. Do not allow the fitting to overheat.
6. Leave drain valve (2), shut-off valves (3 & 5) and test cocks (4) in the half open/half closed position (45°) for the duration of the winter to prevent freezing.
7. Store valve housing/check assemblies, clamp/sleeve and o-rings in sealed plastic bag during winter to prevent weathering.

To Flush System during installation, use the following procedures:

1. Install backflow device in pipe system, leave water off.
2. Remove the black backflow preventer housing from the bronze body.
3. Install the orange Blow-Out / Flush fitting into the bronze body.
4. Thread a garden hose adapter into Flush-Out port (7). Connect a hose to the adapter and run to a safe drain. Shut-off valves (3) and (5) should be open.
5. Turn on water supply at main shut-off valve (1) to flush out any debris in the pipe. Turn water off.
6. Remove orange Blow-Out / Flush fitting and replace black check housing back into the line. Close shut-off valves (3) and (5). Turn water on at main shut-off (1).
7. Slowly open shut-off valve (3) to pressurize backflow preventer. Once fully open, pressurize system by slowly opening shut-off valve (5).

CAUTION: For freeze protection be certain that main shut-off valve (1) re-mains tightly closed to prevent refilling of the system. Also, the main shut-off valve must be resilient seated to insure no leakage of water into the system.

WARRANTY: ZURN WILKINS Valves are guaranteed against defects of material or workmanship when used for the services recommended. If in any recommended service, a defect develops due to material or workmanship, and the device is returned, freight prepaid, to ZURN WILKINS within 12 months from date of purchase, it will be repaired or replaced free of charge. ZURN WILKINS liability shall be limited to our agreement to repair or replace the valve only.

WARNING: This product contains a chemical known to the State of California to cause cancer, birth defects and other reproductive harm
ADVERTENCIA: Este producto contiene una sustancia química que el Estado de California como causante de cáncer, defectos de nacimiento y otros daños reproductivos



1747 Commerce Way, Paso Robles, CA 93446 Phone:855-663-9876 Fax:805-238-5766

ZURN WILKINS

www.zurn.com