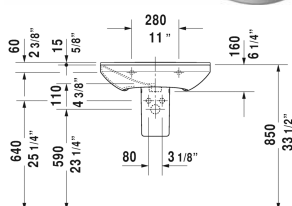
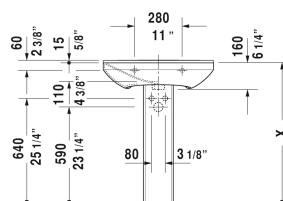
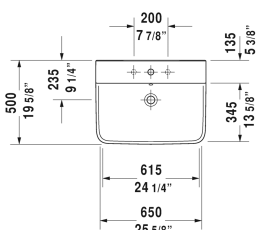



## P3 Comforts Washbasin # 2331650000 / 2331650030

| < 25 5/8" Inch > |



Washbasin	Dimension	Weight	Order number
with overflow, with faucet deck, overflow clip Chrome included, underside fully glazed, hardware included, wall-mounted, cUPC® listed*, 25 5/8" Inch			
Colors			
00 White			
Variant			
●	25 5/8" x 19 5/8" Inch	39.7 lb	2331650000
● ● ●	25 5/8" x 19 5/8" Inch	39.7 lb	2331650030
Infobox			
* Complies with following standards: ASME A112.19.2/CSA B45.1, Washbasin is not ADA compliant in combination with pedestal, siphon cover or metal console			
Sanitary ceramics with the special WonderGliss surface finish will remain clean and attractive-looking for a long time to come. When ordering WonderGliss please add a "1" as eleventh digit to the model number.			
Suitable products			
Siphon cover for # 233155, 233160, 233165, 233265, 233285, 233210, 233212, 233385, 233310, 233312, 233485, 233410, 233412, 6 3/4" x 11 3/4" Inch			085837
Pedestal for # 233155, 233160, 233165, 233265, 233285, 233210, 233212, 233385, 233310, 233312, 233485, 233410, 233412, 6 7/8" x 8 1/4" Inch			085836

All drawings contain the necessary measurements which are subject to standard tolerances. They are stated in inch & mm and are non-

**P3 Comforts Washbasin  # 2331650000 / 2331650030**

---

**|< 25 5/8" Inch >|**

*binding. Exact measurements, in particular for customized installation scenarios, can only be taken from the finished ceramic piece.*