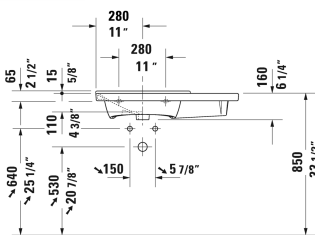
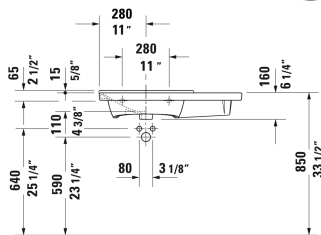
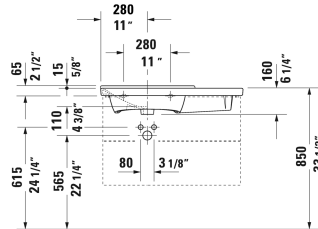
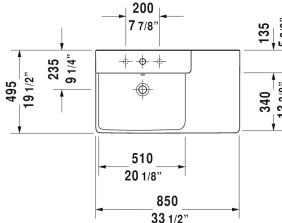


P3 Comforts Furniture washbasin asymmetric & # 2333850000 / 2333850030 / 2333850060

|< 33 1/2" Inch >|



Furniture washbasin asymmetric	Dimension	Weight	Order number
with overflow, with faucet deck, overflow clip Chrome included, hardware included, wall-mounted, cUPC® listed*, 33 1/2" Inch			
Colors			
00 White			
Variant			
●	33 1/2" x 19 1/2" Inch	56 lb	2333850000
● ● ●	33 1/2" x 19 1/2" Inch	56 lb	2333850030
⊗	33 1/2" x 19 1/2" Inch	56 lb	2333850060
Infobox			
* Complies with following standards: ASME A112.19.2/CSA B45.1, Washbasin is not ADA compliant in combination with pedestal, siphon cover or metal console			
Sanitary ceramics with the special WonderGliss surface finish will remain clean and attractive-looking for a long time to come. When ordering WonderGliss please add a "1" as eleventh digit to the model number.			
Space-saving siphon	1 1/4" Inch	0.9 lb	005076
Suitable products			
Vanity unit wall-mounted 1 pull-out compartment, for P3 Comforts # 233285, 233385, 233485, 32 1/4" x 19" Inch	32 1/4" x 19" Inch		LC6147

P3 Comforts Furniture washbasin asymmetric & # 2333850000
/ 2333850030 / 2333850060

|< 33 1/2" Inch >|

Vanity unit wall-mounted 2 drawers, upper drawer including cut-out for siphon and siphon cover, for P3 Comforts # 233385 basin left, 32 1/4" x 19" Inch	32 1/4" x 19" Inch	LC6248
Vanity unit floorstanding 2 pull-out compartments, for P3 Comforts # 233285, 233385, 233485, 32 1/4" x 19" Inch	32 1/4" x 19" Inch	LC6601

All drawings contain the necessary measurements which are subject to standard tolerances. They are stated in inch & mm and are non-binding. Exact measurements, in particular for customized installation scenarios, can only be taken from the finished ceramic piece.